

FEATURES



USED BY:

- SHIPYARDS
- STEEL PLANTS
- MILITARY
- MANUFACTURERS OF:
  - TRAILERS
  - ENGINES
  - ELECTRICAL APPLIANCES
  - CUSTOM VEHICLES
  - MACHINERY

IDEAL FOR:

- MANUAL PERSONALIZATION OF METAL PLATES IN ALL ENVIRONMENTS

NO POWER SUPPLY REQUIRED

TOTALLY PORTABLE



# MANUAL SERIES

## M10 HE



**EMBOSSING OR DEBOSSING  
PORTABLE, ROBUST AND COMPACT FOR  
DOG TAG AND METAL PLATE MARKING**

Embossing type set

Block 5 mm



Simplex 2



Block USA

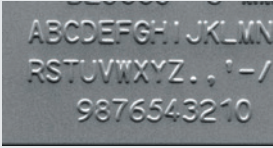


Debossing type set

Elite Dog Tag

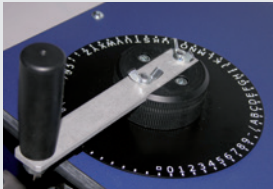


# TECHNICAL FEATURES



## PLATE

<b>plate dimensions</b>	width 12 ÷ 95 mm / 0.47 ÷ 3,74 in height 12 ÷ 75 mm / 0.47 ÷ 2,95 in thickness 0,4 ÷ 0,9 mm / 0.0157 ÷ 0,0354 in
<b>plate materials</b>	stainless steel, carbon steel, alluminum, copper, brass
<b>feed</b>	manual

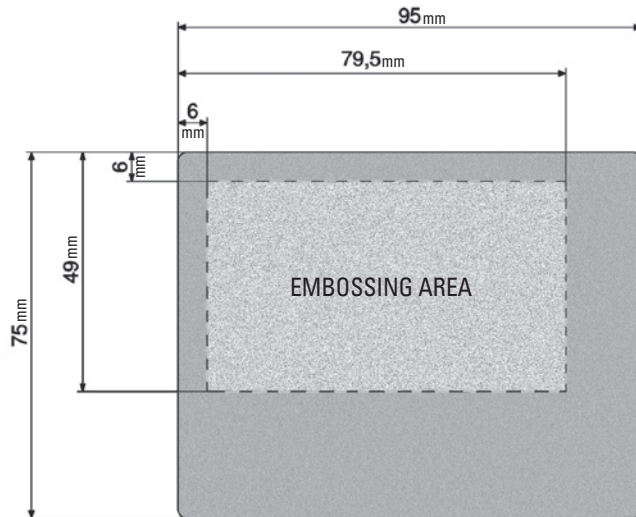


Character selection ring

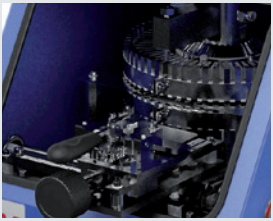
## EMBOSSING

<b>technology</b>	Embossing or debossing
<b>drum capacity</b>	60 slots
<b>type set</b>	many characters configurations available: Embossing: Simplex 2, OCRB1, Block USA, Block 5 mm - others available on request Debossing: Elite Dog Tag

## embossing area\*



\*Measurements are taken from the base and left side of the character.



60 characters capacity drum

## HARDWARE

<b>dimensions (WxDxH)</b>	250 x 440 x 260 mm / 9.8 x 17.3 x 10.2 in
<b>weight</b>	13 kg/ 28 lbs

## WARRANTY

12 months

Portable, yet robust and compact. The **M10 HE** is entirely manual and can be used anytime, anywhere.

No power supply required.

With its 60 characters capacity drum, the automatic spacing function and the whole plate free format, the **M10 HE** is designed to meet a wide range of requirements and is ideal for the personalization of low to medium tag volumes.

**HE**  
**m10**



cim-usa.com

