

FEATURES

STANDARD



OPTIONAL



USED BY:

- CLUBS/ASSOCIATIONS
- INSURANCE COMPANIES
- PRIVATE ORGANIZATIONS
- RETAIL STORES
- HOTELS
- AMUSEMENT PARKS
- FAST FOOD
- PUBLIC ADMINISTRATION
- HOSPITALS
- TRANSPORT COMPANIES
- CLUBS/ASSOCIATIONS
- SERVICE BUREAUS
- BANKS/CREDIT INSTITUTIONS

IDEAL FOR:

- CREDIT CARDS AND OTHER FINANCIAL CARDS*
- ID CARDS
- GIFT CARDS
- PREPAID CARDS
- ACCESS CONTROL
- FIDELITY CARDS
- PATIENT ID CARDS
- DISCOUNT CARDS

* Compatible with most 3rd party EMV personalization software solutions

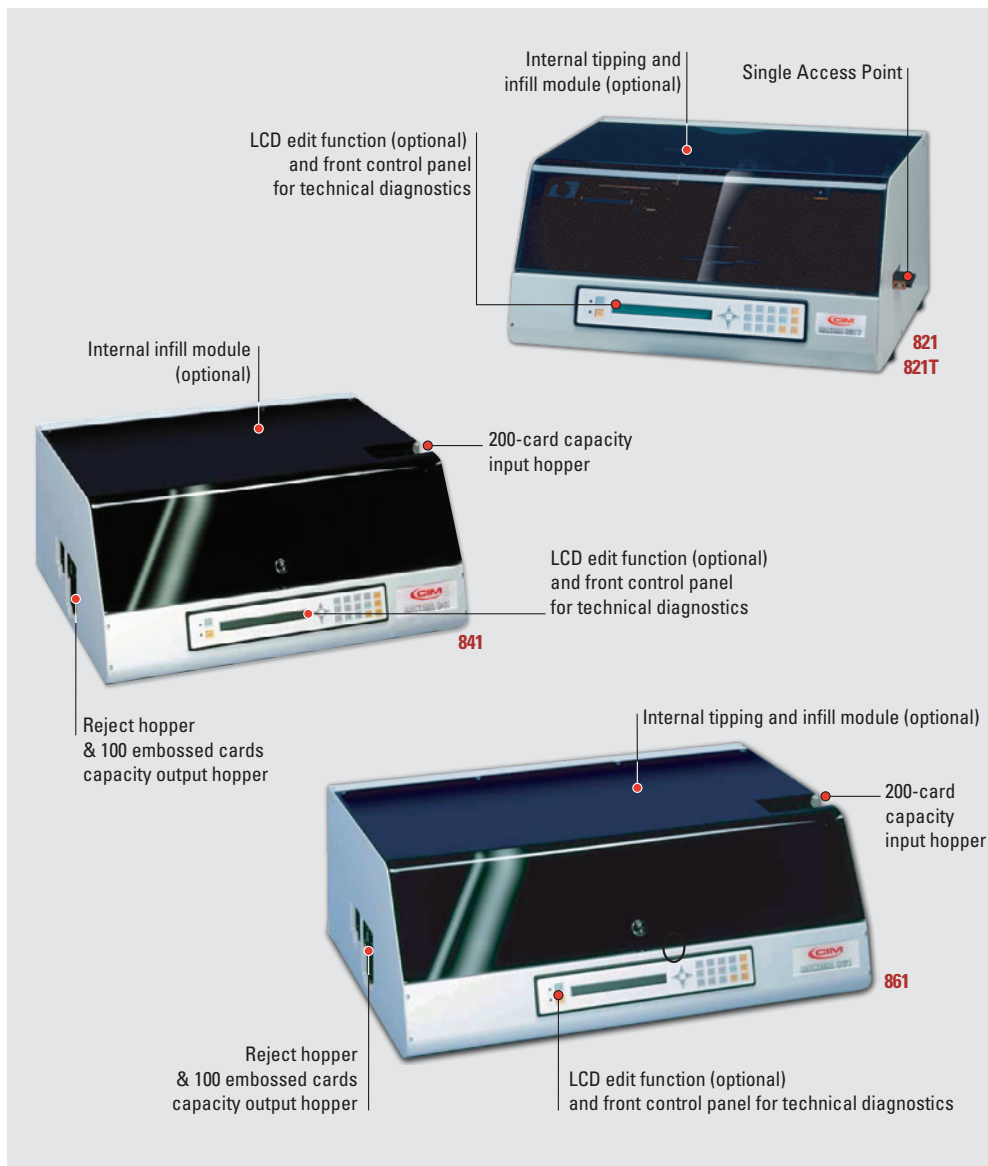
SOFTWARE

INSTANTCARD



MAXIMA SERIES

821-841-861



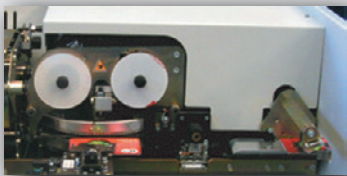
UNSURPASSED RELIABILITY

FLEXIBLE SOLUTIONS FOR YOUR CARD PERSONALIZATION REQUIREMENTS

- ✓ 60/80/105 characters capacity drum
- ✓ One pass to emboss and front or rear infill (optional)
- ✓ Encoding:
 - Magnetic stripe (ISO)
 - Smart Card Contact Station



TECHNICAL FEATURES



Embossing and infill



Internal tipping unit

MAXIMA 821
MAXIMA 841
MAXIMA 861

INSTANTCARD



certification
for MAXIMA
861 only



CARD & FEEDER

card specifications	CR-80 - ISO standard (85,6 mm L x 53,98 mm W / 3.375 " L x 2.125 " W)
thickness	thickness 0,68 mm - 0,84 mm / 26.77 mil – 33.07 mil
card materials	Abs, pvc and composite
input hopper	821/821T: manual feed - Single Access Point 841/861: 200 cards capacity automatic hopper - FIFO (First In - First Out)
output hopper	841/861: 100 embossed cards
reject hopper	841/861: 10 cards capacity 821/821T: alarm notification

EMBOSSING

technology	embossing & ident
drum capacity	60/80/105 characters standard; 120 characters drum for MAXIMA 821T on request
characters	Standard Gothic, OCR7B, country specific characters (optional), etc.
embossing area	12 lines x 31 characters (76 x 52 mm area / 3" x 2.05" in)
internal tipping unit	821T/861: off line tipping option (76 x 41 mm area / 3" x 1.61" in). Ribbon saving function
infill unit	optional infill (available fonts OCRB1/B4 and others) or rear infill device (CW2 - OCRA1)
performance*	821: 240 CHP (1 card in 15 seconds) - 841: 280 CPH (1 card in 12.8 seconds) 861: 260 CHP (1 card in 13.8 seconds) *depending on the job

ENCODING OPTIONS

magnetic encoding	optional: 3 ISO 7811 tracks, LoCo, HiCo
smart card contact station	optional

COMMUNICATION INTERFACE & SOFTWARE

connection interface	RS232 serial port
operating systems	INSTANT CARD operating with Windows 7/8/10/11 Pro.
application program	user interface monitoring, card production control, automatic card remake option, pre-encoded card reading with complete processing operation, system status and help messages displayed on personal computer

LCD edit optional: offline LCD function

HARDWARE

dimensions (WxDxH)	821: 450 x 485 x 290 mm / 17.7" x 19.1" x 11.4" in 821T: 585 x 485 x 290 mm / 23" x 19.1" x 11.4" in 841: 535 x 485 x 290 mm / 21" x 19.1" x 11.4" in 861: 745 x 485 x 290 mm / 29.3" x 19.1" x 11.4" in
weight	821: 35 kg / 77 lbs 821T: 42 kg / 93 lbs 841: 40 kg / 88 lbs 861: 54 kg / 119 lbs
power supply	100-117-220-230 or 240 Volts - 50 or 60 Hz
operating environment	10° C ÷ 35° C / 50° F ÷ 95° F

WARRANTY 12 months

MAXIMA SERIES: CONVENIENT, USER FRIENDLY & VERSATILE, the MAXIMA Series can easily be adapted into a variety of environments and applications. Available with many options such as variable drum capacity, embossing, infill, tipping, magnetic stripe and smart card management, the MAXIMA series meets the requirements of **VISA** and **MasterCard** for standard credit card personalization.

The MAXIMA 821T is perfect for decentralized applications that require immediate and small scale card issuance. The **MAXIMA 841** has long been favored for stress cards and proven to be the best solution for patient ID card production, i.e. in Hospitals and Health Care Services.

The MAXIMA 861 has become a favorite in Banks and Credit Institutions. It's particularly suitable for medium scale card issuance.

cim-usa.com

